



# GMT MONTHLY MEMBERSHIP PROGRESS REPORT

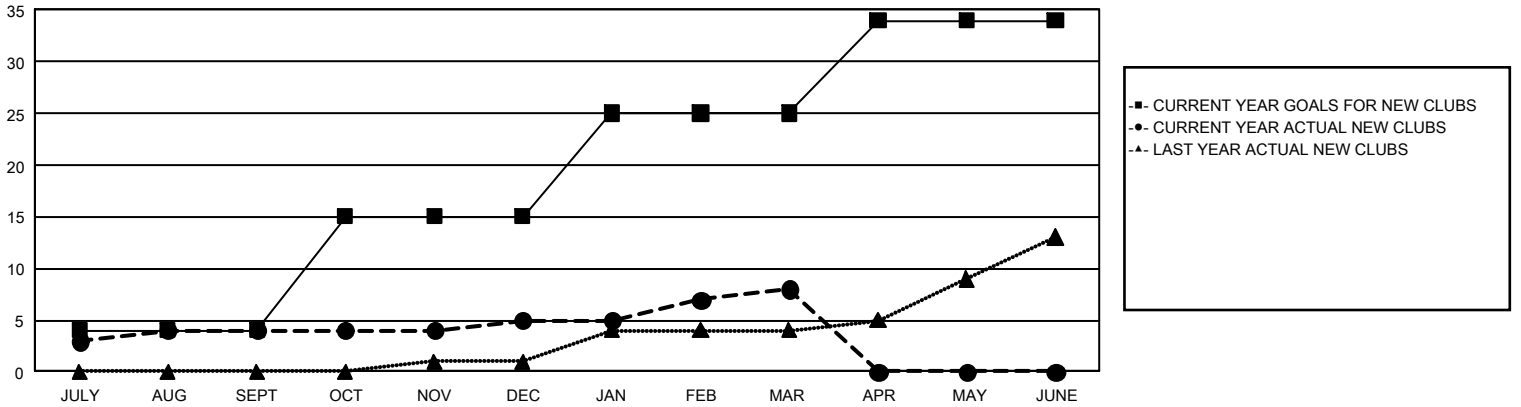
## GAT Constitutional Area 2

Results as of: 3/31/2026

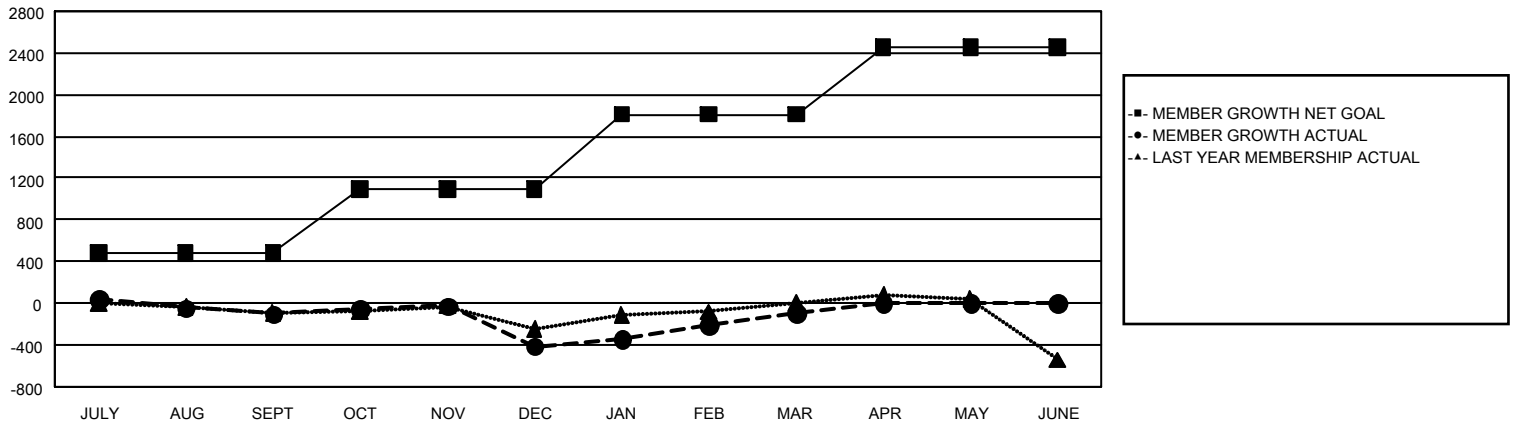
REPORT DOES NOT INCLUDE CLUBS IN UNDISTRICTED AREAS.

Clubs				Members			
RESULTS FOR 2025-2026				RESULTS FOR 2025-2026			
QUARTER	NEW CLUB GOAL	NEW CLUBS	DROPPED CLUBS	QUARTER	MEMBER GROWTH NET GOAL	MEMBER GROWTH ACTUAL	DROPPED MEMBERS ACTUAL (including transfers)
JULY/AUG/SEPT	4	4	3	JULY/AUG/SEPT	483	669	652
OCT/NOV/DEC	11	1	20	OCT/NOV/DEC	609	908	1,079
JAN/FEB/MAR	10	3	5	JAN/FEB/MAR	718	1,068	603
APR/MAY/JUNE	9	0	0	APR/MAY/JUNE	647	0	0

GOALS AND ACTUAL NEW CLUBS CUMULATIVE



GOALS AND ACTUAL MEMBERS CUMULATIVE



DROPPED CLUBS: 28	643 CLUBS OF 1,169 ADDED 1 OR MORE NEW MEMBERS	<u>GENDER DISTRIBUTION</u>	
<u>DROPPED MEMBERS</u>		MALE	16,119 (62.26%)
DECEASED	302	FEMALE	9,749 (37.66%)
CLUB CANCELLED	188	TOTAL FAMILY UNIT MEMBERS 4,599	
OTHER	1,833		
TOTAL	2,323		
<a href="#">CLICK HERE FOR CUMULATIVE MEMBERSHIP DATA</a>			